

MEC

Echogenic Chiba
disposable needle

Code: 0MEC

A



Transparent
Luer Lock

B



Chiba
sharpened tip

C

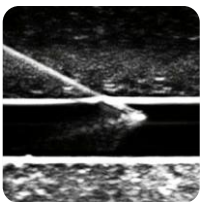


Teflon covering
on the whole
length of the cannula

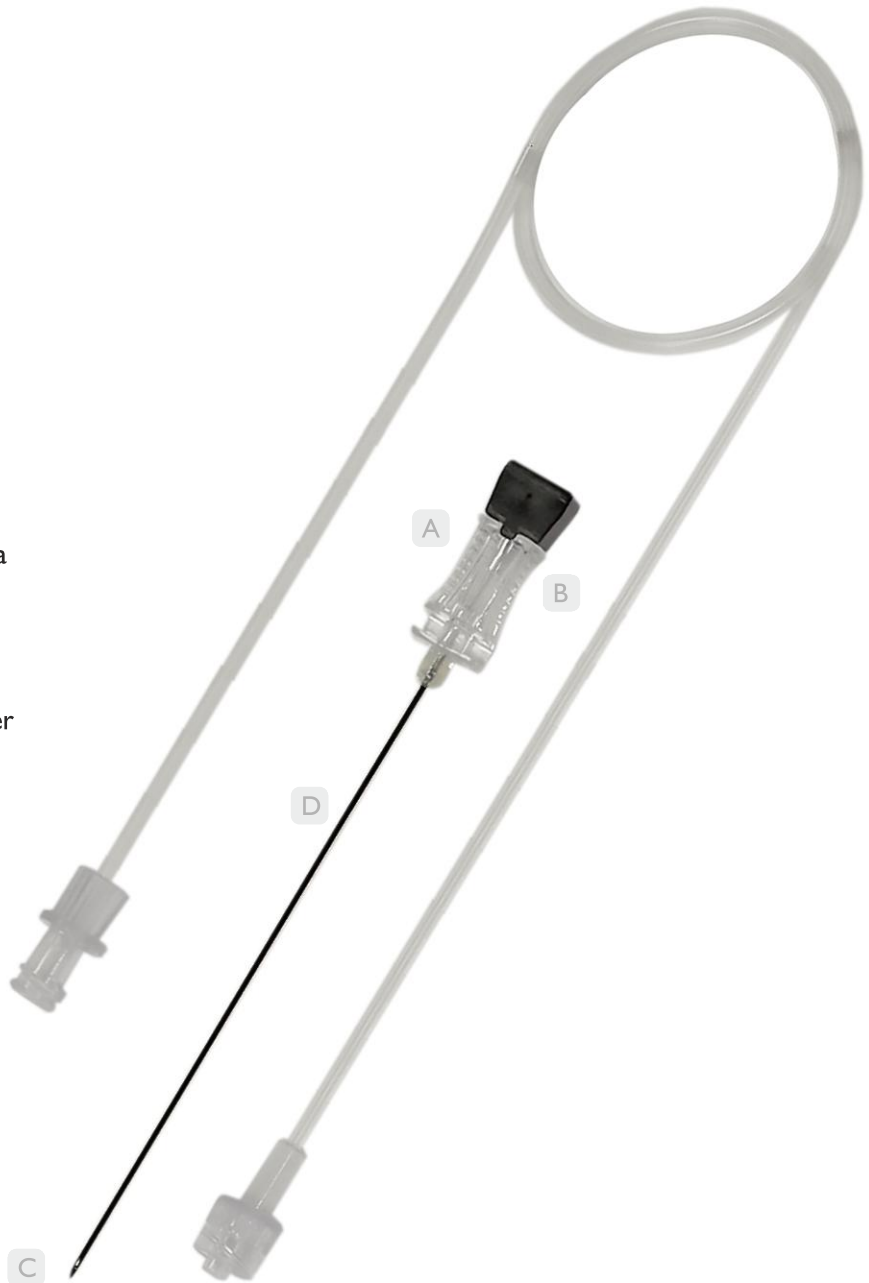
D



Internal echo-marker
Depth marks



Visible under
ultrasound



CE
0426

biomedical



MEC

Echogenic Chiba
disposable needle

Code: 0MEC

M-72 I-538 rev. A del 03/09/2012

To order:

CODE	SIZE	PACKAGE	C. CODE
0MEC 1810	18Gx10 cm	20	PINK
0MEC 1815	18Gx15 cm	20	PINK
0MEC 1820	18Gx20 cm	20	PINK
0MEC 2010	20Gx10 cm	20	YELLOW
0MEC 2015	20Gx15 cm	20	YELLOW
0MEC 2020	20Gx20 cm	20	YELLOW
0MEC 2210	22Gx10 cm	20	BLACK
0MEC 2215	22Gx15 cm	20	BLACK
0MEC 2220	22Gx20 cm	20	BLACK

On request Biomedical is available to provide needles with different diameters and lengths.

biomedical

Biomedical srl Via G.B.Lulli, 43 50144 Firenze Italy
Tel +39 055 352678 +39 055 332822 Fax +39 055 331629
www.biomedical-bio.net sales@biomedical-bio.net

Bone biopsy needles

Guillotine needles for biopsy on soft tissues

Cyto-aspiration needles

Different specialistic needles and sets

Loco-regional anaesthesia needles and sets

Thermic and absorbing sheets