

Bioshot

Disposable automatic guillotine needle
for biopsy on soft tissues

Code: OBS



A Safety catch



B Lower releaser
for automatic shot



C Upper releaser
for automatic shot



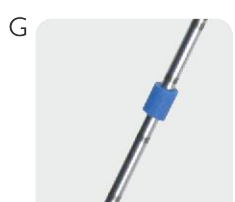
D Cursor to
charge the
stylet



E Cursor to
charge the
cannula



F Choice between
two different
sampling depths



G Sliding stopper
Internal echo-marker
Depth marks



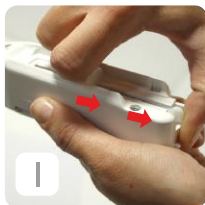
CE
0426

Bioshot

Code: OBS

Disposable automatic guillotine needle for biopsy on soft tissues

Instruction of use



Withdraw the cannula cursor until it stops (hooking click)

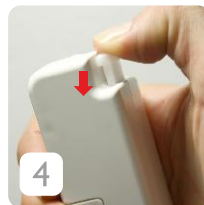
Withdraw the stylet cursor on until it stops (hooking click)



Put the safety catch on LOAD position



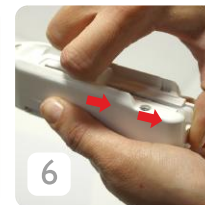
Choose the sample's length to take by moving the proper selector on the longer or the shorter position



Push the upper shooting button*



Or artenatively push the lower shootin button*

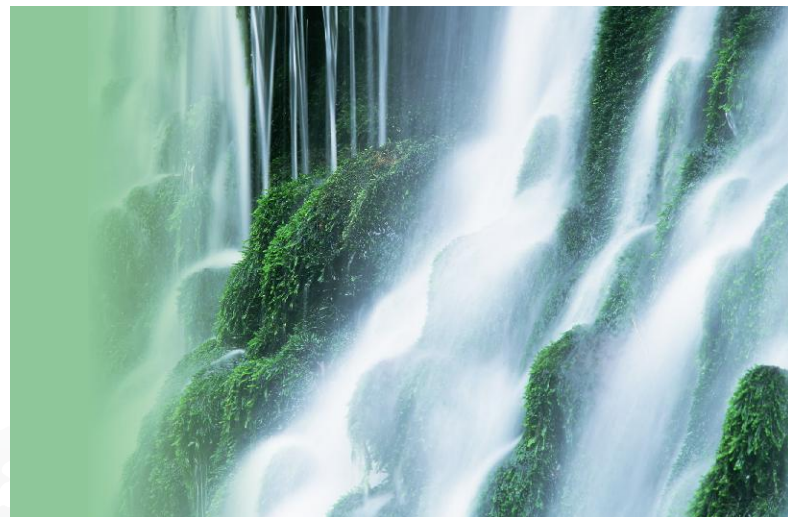


To extract the needle: withdraw the cannula cursor until it stops (hooking click) in order to uncover the stylet for the frustule taking

(*) The device can be used also as semi-automatic needle pushing the shooting button softly: the first press starts the stylet, the second one starts the cannula.

To order:

CODE	SIZE	PACKAGE	C. CODE
OBS 1410	14Gx10 cm	20	DARK GREEN
OBS 1415	14Gx15 cm	20	DARK GREEN
OBS 1420	14Gx20 cm	20	DARK GREEN
OBS 1610	16Gx10 cm	20	WHITE
OBS 1615	16Gx15 cm	20	WHITE
OBS 1620	16Gx20 cm	20	WHITE
OBS 1625	16Gx25 cm	20	WHITE
OBS 1810	18Gx10 cm	20	PINK
OBS 1815	18Gx15 cm	20	PINK
OBS 1820	18Gx20 cm	20	PINK
OBS 1825	18Gx25 cm	20	PINK



On request Biomedical is available to provide needles with different lengths and 20G diameter.

biomedical

Biomedical srl Via G.B.Lulli, 43 50144 Firenze Italy
Tel +39 055 352678 +39 055 332822 Fax +39 055 331629
www.biomedical-bio.net sales@biomedical-bio.net

Bone biopsy needles

Guillotine needles for biopsy on soft tissues

Cyto-aspiration needles

Different specialistic needles and sets

Loco-regional anaesthesia needles and sets

Thermic and absorbing sheets